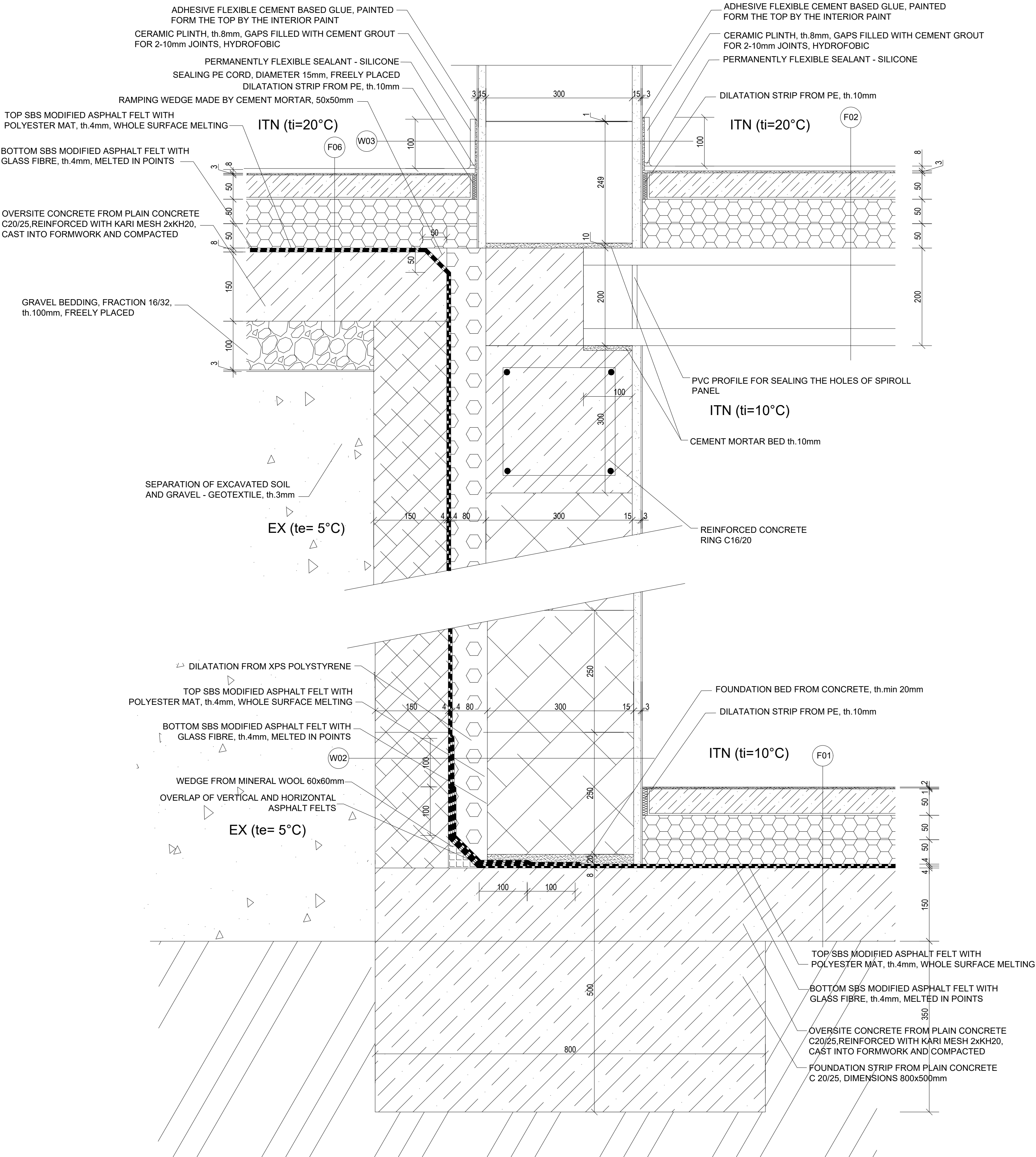


DETAIL E - BASEMENT CONNECTION



LEGEND OF MATERIALS:

- LOAD-BEARING FORMWORK BLOCKS BTB 50/30/25 (P+D), LxWxH 500x300x250mm, FILLED WITH REINFORCED CONCRETE C20/25, STEEL B500B DESIGNED ACCORDING TO STRUCTURAL DESIGN (NOT PART OF THIS PD), REI 180 DP1
- SUPPORTING WALL FROM FORMWORK BLOCKS BTB 50/15/25 (P+D), LxWxH 500x150x250mm, FILLED WITH REINFORCED CONCRETE C20/25, STEEL B500B DESIGNED ACCORDING TO STRUCTURAL DESIGN (NOT PART OF THIS PD), REI 180 DP1
- LOAD-BEARING WALL FROM CERAMIC BLOCKS POROTHERM 30 PROFI, th. 300mm, LxWxH 247x300x249mm, LAID ON THIN MORTAR JOINT, R<sub>w</sub>=48dB, REI 180 DP1
- REINFORCED CONCRETE, C25/30, STEEL B50B
- PLAIN CONCRETE, C20/25
- BOARD FROM GREY EPS 150, λ<sub>p</sub>=0,032 W/mK, th. 2x50mm
- PLASTERS, ADHESIVE COMPOUNDS, DIFFERENT TYPES AND THICKNESSES, FOR EXACT SPECIFICATION SEE COMPOSITIONS
- AGGREGATE - GRAVEL
- EXCAVATED SOIL, COMPACTED
- THERMAL INSULATION FROM EXTRUDED POLYSTYRENE, XPS 300 L, th. 160mm, STRENGTH 300 kPa, λ<sub>p</sub>=0,033 W/mK
- WATERPROOFING - 2 x SBS MODIFIED ASPHALT FELT, th. 8mm
- ORIGINAL SOIL, CLAY SANDS / SILTY GRAVEL

COMPOSITIONS

W02	SURFACE FINISH - SILICATE INTERIOR PAINT, 2-3 LAYERS	(0,30kg/m2)
	PENETRATION LAYER - PRIMER FOR SILICATE PLASTERS	(0,25kg/m2)
	SURFACE LAYER - FINISHING PLASTER - INTERNAL STUCCO PLASTER	3mm
	BASE LAYER - CORE PLASTER - INTERNAL LIME-CEMENT PLASTER	15mm
	LOAD-BEARING LAYER - FORMWORK BLOCKS BTB 50/30/25 (P+D)	300mm
	THERMAL INSULATION - EXTRUDED POLYSTYRENE, XPS 300 L	80mm
	WATERPROOFING - SBS MODIFIED ASPHALT FELT WITH POLYESTER MAT	4mm
	WATERPROOFING - SBS MODIFIED ASPHALT FELT WITH GLASS FIBRE	4mm
	PENETRATION LAYER - ASPHALT EMULSION	(0,4l/m2)
	SUPPORTING LAYER - FORMWORK BLOCKS BTB 50/15/25 (P+D)	150mm

W03	SURFACE FINISH - SILICATE INTERIOR PAINT, 2-3 LAYERS	(0,30kg/m2)
	PENETRATION LAYER - PRIMER FOR SILICATE PLASTERS	(0,25kg/m2)
	SURFACE LAYER - FINISHING PLASTER - INTERNAL STUCCO PLASTER	3mm
	BASE LAYER - CORE PLASTER - INTERNAL LIME-CEMENT PLASTER	15mm
	LOAD-BEARING LAYER - BLOCKS POROTHERM 30 PROFI	300mm
	BASE LAYER - CORE PLASTER - INTERNAL LIME-CEMENT PLASTER	15mm
	SURFACE LAYER - FINISHING PLASTER - INTERNAL STUCCO PLASTER	3mm
	PENETRATION LAYER - PRIMER FOR SILICATE PLASTERS	(0,25kg/m2)
	SURFACE FINISH - SILICATE INTERIOR PAINT, 2-3 LAYERS	(0,30kg/m2)

F01	SURFACE LAYER - UNDILUTED EPOXY COATING (0,45kg/m2)	2mm
	BASE LAYER - 5-10% DILUTED EPOXY COATING (0,2kg/m2)	1mm
	PENETRATION LAYER - 20-30% DILUTED EPOXY COATING (0,1kg/m2)	-
	LEVELING LAYER - SELF-LEVELING CEMENT SCREED	50mm
	SEPARATION LAYER - PE FOIL	0,185kg/m2
	THERMAL INSULATION - BOARD FROM GREY EPS, 2x50mm	100mm
	WATERPROOFING - SBS MODIFIED ASPHALT FELT WITH POLYESTER MAT	4mm
	WATERPROOFING - SBS MODIFIED ASPHALT FELT WITH GLASS FIBRE	4mm
	PENETRATION LAYER - ASPHALT EMULSION	(0,1kg/m2)
	LOAD-BEARING LAYER - OVERSITE CONCRETE C20/25, 2xKARI MESH	150mm

TOTAL FLOORING THICKNESS: 160mm

F02	SURFACE LAYER - CERAMIC TILES 600x600mm, ANTISLIP SURFACE R10/B	8mm
	GROUTING LAYER - CEMENT GROUT FOR 2-10mm JOINTS, HYDROFOBIC	0,3kg/m2
	ADHESIVE LAYER - FLEXIBLE CEMENT BASED GLUE	2-3mm
	PENETRATION LAYER - CEMENT BASED PRIMER	0,15kg/m2
	LEVELING LAYER - SELF-LEVELING CEMENT SCREED	50mm
	SEPARATION LAYER - PE FOIL	0,18 kg/m2
	THERMAL & ACOUSTIC INSULATION - BOARD FROM GREY EPS, 2x50m	100mm
	LOADBEARING LAYER - SPIROLL PANEL	200mm

TOTAL FLOORING THICKNESS: 160mm

F06	SURFACE LAYER - WOODEN FLOOR PARQUETS	18mm
	UNDERLAY LAYER - PE FOIL	2mm
	LEVELING LAYER - SELF-LEVELING CEMENT SCREED	50mm
	SEPARATION LAYER - PE FOIL	0,185kg/m2
	THERMAL & ACOUSTIC INSULATION - BOARD FROM GREY EPS, 2x50m	100mm
	WATERPROOFING - SBS MODIFIED ASPHALT FELT WITH GLASS FIBRE	4mm
	WATERPROOFING - SBS MODIFIED ASPHALT FELT WITH POLYESTER MAT	4mm
	PENETRATION LAYER - ASPHALT EMULSION	(0,1kg/m2)
	LOAD-BEARING LAYER - OVERSITE CONCRETE C20/25, 2xKARI MESH	150mm

TOTAL FLOORING THICKNESS: 170mm

0,000 =240,24		m.a.s.l., B.H.S. / COORDINATE SYSTEM S-JTSK			
COURSE	DIPLOMA THESIS	<div>T</div>	<div>FAKULTA</div> <div>STAVEBNÍ</div> <div>Ústav</div> <div>zemního stavebnictví</div>		
DRAWN BY	BARBORA HUSÁROVÁ				
SUPERVISED BY	ING. JAN MÜLLER PH.D.				
INVESTOR					
LOCATION	POŘADÍ, 687 51 NIVNICE, PARCELS No. 65, 64, 63, 61, 57				
PROJECT TITLE	MUNICIPAL CENTRE IN NIVNICE				
			PAPER FORMAT	630x594	
BUILDING OBJECT	BO 01 MUNICIPAL CENTRE		DATE	01/2025	
PART	D.1.1 ARCHITECTURAL BUILDING SOLUTION		PROJ. PHASE	DPS	
DRAWING TITLE:	DETAIL E - BASEMENT CONNECTION		SCALE	1:5	DRAWING NO. D.1.1.14